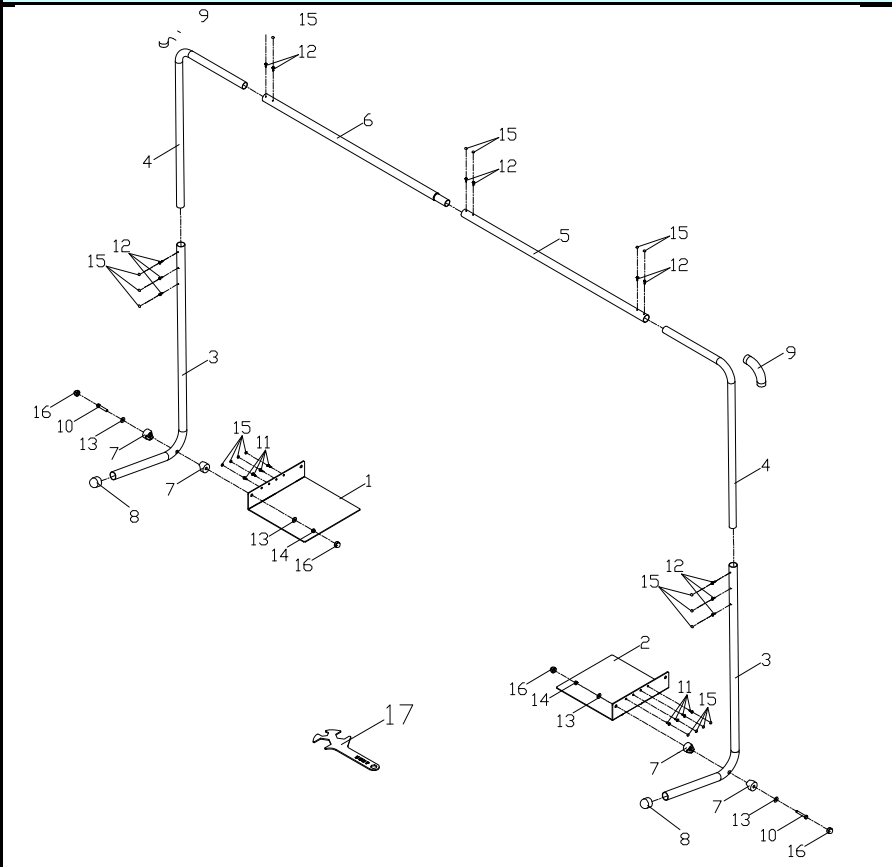


Cover Rock - IT OWNER'S MANUAL

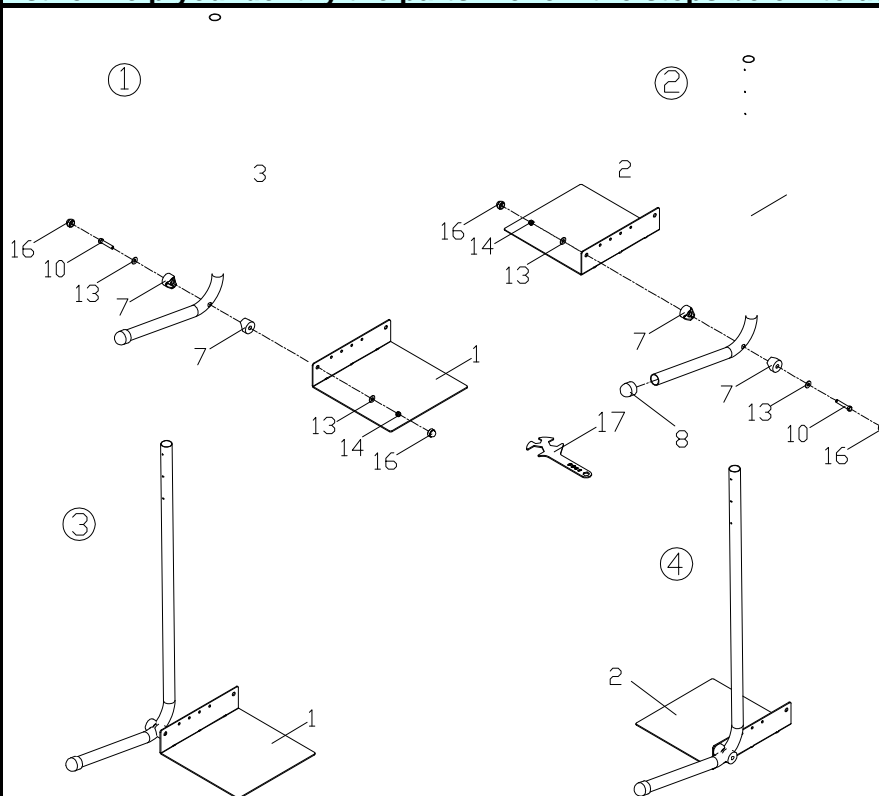
EXPLODED DIAGRAM & PARTS LIST



PART NO.	DESCRIPTIONS	Q'TY
1	Left Base bracket	1
2	Right Base bracket	1
3	Support Tube	2
4	Top Support Tube	2
5	Right Connect Tube	1
6	Left Connect Tube	1
7	Plastic Pivot	4
8	Round Cap	2
9	Foam	2
10	Hex Head Screw M10	2
11	Phillips Screw Head	8
12	Phillips head self tapping screw	12
13	Flat Washer	4
14	Nut	2
15	Plastic Cap M4	20
16	Black Cap M10	4
17	Wrench	2

ASSEMBLY

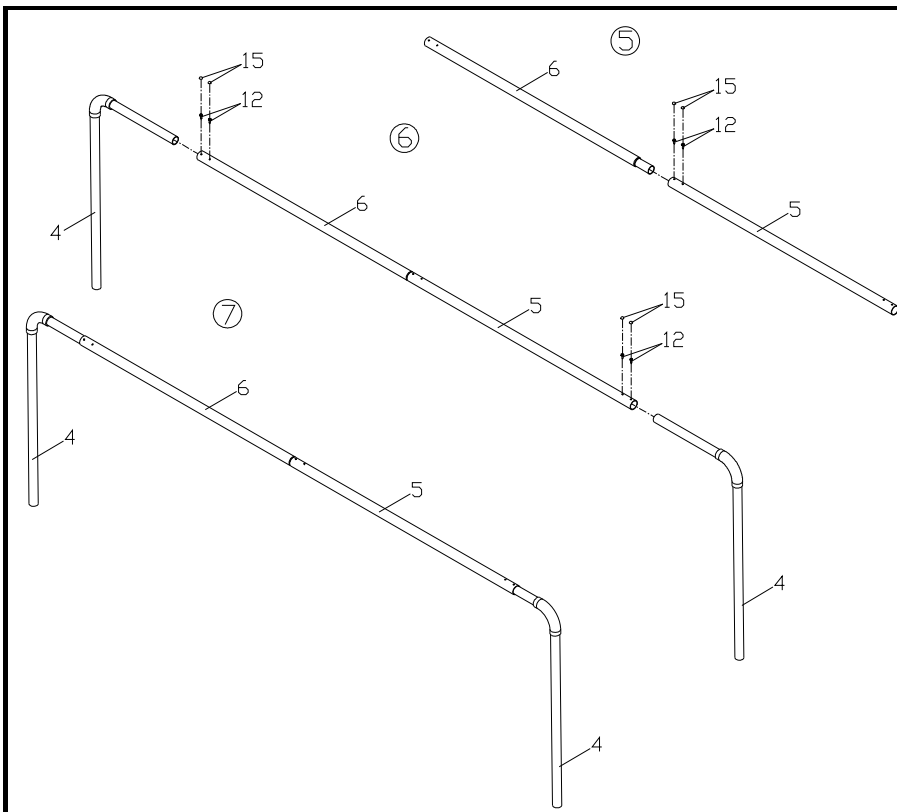
Set all parts in a clear area on the floor and remove the packing materials. Refer to the parts list for help you identify the parts. Follow the steps below to assemble the machine.



STEP 1:

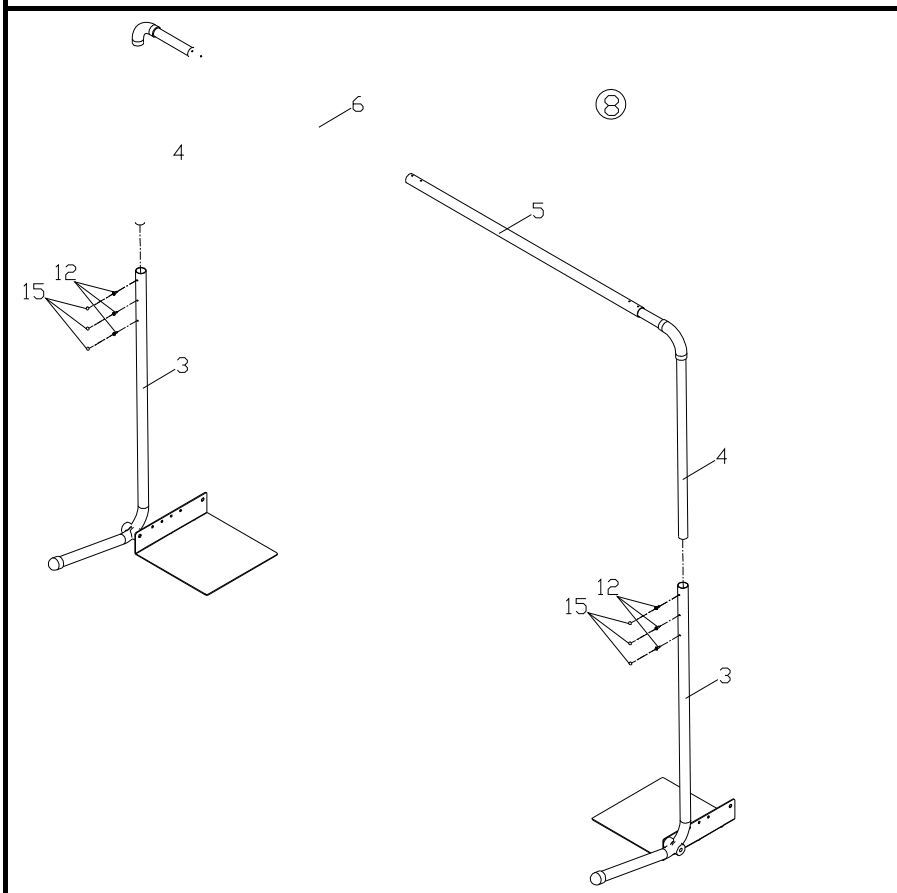
Using HEX HEAD SCREW M10 (10) 2 pieces, FLAT WASHER (13) 4 pieces and NUT (14) 2 pieces pass through PLASTIC PIVOT (7) to fixed up the SUPPORT TUBE (3) with each LEFT BASE BRACKET (1), RIGHT BASE BRACKET (2) by WRENCH (17), please refer the illustration at 1 & 2.

Then put the BLACK CAP M10 (16) 4 pieces at HEX HEAD SCREW M10 (10) 2 pieces and NUT (14) 2 pieces, done as shown in illustration 2 & 4. If needed, add (11) Phillips Head Self Head



STEP 2:

First using PHILLIPS HEAD SELF TAPPING SCREW (12) 2 pieces to fixed out with RIGHT CONNECT TUBE (5) and LIFT CONNECT TUBE (6), then put the PLASTIC CAP M4 (15) 2 pieces at PHILLIPS HEAD SELF TAPPING SCREW (12), as shown in illustration 5. Second according to width of the box insert the TOP SUPPORT TUBE (4) into each side of RIGHT CONNECT TUBE (5), LIFT CONNECT TUBE (6) together and fixed up by PHILLIPS HEAD SELF TAPPING SCREW (12) 4 pieces, then put the PLASTIC CAP M4 (15) 4 pieces at PHILLIPS HEAD SELF TAPPING SCREW (12), as shown in illustration 6. All the assembled in illustration 7. If needed, add (11) Phillips Head Self Head



STEP 3:

Put the assembled TOP SUPPORT TUBE (4) inserted to each of SUPPORT TUBE (3), accordance to adjustable in height and fixed up by PHILLIPS HEAD SELF TAPPING SCREW (12) 4 pieces, then put the PLASTIC CAP M4 (15) 4 pieces at PHILLIPS HEADSELF TAPPING SCREW (12), as shown in illustration 8.

STEP 4:
Finished as shown in left
illustration 9

